

The Singapore Ability Scales (SAS) is an individually administered, comprehensive instrument designed to measure clearly identifiable abilities that are significant for learning and educational performance. It is developed for use by psychologists and researchers working with the local school-age population.

## WHAT MAKES THE SAS UNIQUE



The Only One in Singapore



Updated Contents



Locally Relevant

The table below provides a brief summary of the scales featured in the SAS

SAS Scales	Abilities Measured
<b>Core Scales</b>	
Matrices	Inductive reasoning: identification and application of rules governing relationships among pictures and abstract figures
Pattern Construction	Non-verbal reasoning and spatial visualisation in reproducing designs using foam squares and coloured blocks
Word Definitions	Expressive language: explanations of word meanings
Verbal Similarities	Verbal reasoning and verbal knowledge: identifying and stating similarities between three words
Quantitative Reasoning	Inductive reasoning: detection and application of rules concerning sequential patterns in dominoes and relationships between pairs of numbers
Recognition of Designs	Short-term recognition memory for visuo-spatial relationships in abstract images
<b>Diagnostic Scales</b>	
Recognition of Pictures	Short-term recognition memory for images of familiar objects
Recall of Digits Forward	Short-term auditory memory and oral recall of sequences of numbers
Recall of Objects	Short-term and intermediate verbal and visuo-spatial recall of pictures of familiar objects
Recall of Digits Backward	Working memory and oral recall of sequences of numbers
Speed of Information Processing	Speed in performing simple mental operations
<b>Achievement Scales</b>	
Number Skills	Recognition of printed numbers, performance of arithmetic operations and mathematical problem-solving
Spelling	Knowledge and recall of spellings
Word Reading	Recognition (decoding) of printed words

# SAS TRAINING PROGRAMME

To ensure appropriate, effective, and rigorous administration and translation of the SAS, NIE International is conducting the *Singapore Ability Scales Training Programme* for prospective users of the test.



## ADMISSION REQUIREMENTS

### CERTIFIED USER

Registered psychologist with certification by the Singapore Psychological Society and/ or recognised national professional bodies from overseas such as the National Association of School Psychologists (NASP), the British Psychology Society (BPS) and the Australian Health Practitioner Regulation Agency (AHPRA).

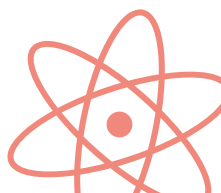
### SUPERVISED USER

To guarantee the rigorous and efficient execution and application of the SAS Supervised User Training Programme, it is obligatory for prospective supervised users to have a psychology degree and is currently under professional supervision of a SAS Certified User.

Prospective participants without a Master's degree in Clinical Psychology or Educational Psychology must first complete a prescribed set of readings and successfully pass a brief quiz before they can attend the course.

### CERTIFIED USER

- 1** An introduction to SAS;
- 2** Guidance on how to administer the core, diagnostic and achievement scales;
- 3** Insights to analyse the results from the assessments; and
- 4** Hands-on practice of the SAS.



### SUPERVISED USER

- 1** An introduction to SAS;
- 2** Guidance on how to administer the core, diagnostic and achievement scales;
- 3** Step-by-step guidance on the administration of the SAS with hands on practice; and
- 4** Scoring and Basic analysis of results.
- 5** Guidance on professional standards and ethical use of SAS



Scan the QR code for more information  
and/or to register your interest!

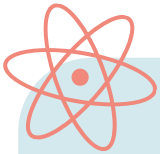


# ABOUT THE TRAINERS



## **Prof Kenneth Poon**

Kenneth is a clinical psychologist and early interventionist with over 25 years of experience working with persons with neurodevelopmental disabilities.



## **Asst/Prof Yeo Lay See**

Lay See is an educational psychologist with more than 20 years of experience training aspiring applied psychologists.

She is a Registered Psychologist in Singapore and a Nationally Certified School Psychologist in the U.S.



## **Asst/Prof Nah Yong Hwee**



Yong Hwee (Fei) is an educational psychologist and approved SPS supervisor with about 20 years of experience working with persons with neurodevelopmental disabilities.



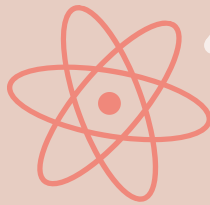
## **Mr Lee Chiew Lim**

Chiew Lim had been trained as an educational psychologist and was involved in the norming of the Singapore Ability Scales.





“The training was helpful as it points out the areas that practitioners may wish to be mindful of when administering the SAS.”



“An opportunity to have a hands-on experience in administering the scale.”

## SAS TRAINING TESTIMONIALS



“Clearly explains the intentions and needs of this scale with relevance to the Singapore context.”



“There were role plays for practice and we studied different profiles to learn analysis/interpretation.”



## SAS CERTIFIED USERS GET YOUR KIT NOW

REACH  
US

Email: [sas@nie.edu.sg](mailto:sas@nie.edu.sg)  
 General Enquiries: 6790 3865  
 Training Enquiries: 6790 3145  
[www.singaporeabilityscales.sg](http://www.singaporeabilityscales.sg)

*Managed by*

**NIE International Pte Ltd**  
 1 Nanyang Walk  
 Singapore 637616



Ministry of Education  
SINGAPORE



An Institute of



**NANYANG  
TECHNOLOGICAL  
UNIVERSITY**  
SINGAPORE

The SAS was developed through a research collaboration between the Ministry of Education, Singapore and the National Institute of Education, Nanyang Technological University, Singapore.